



Megen Works

CAPABILITY STATEMENT

HISTORY:

Megen Construction Company created Megen Works, a self perform division, as another way to deliver Encore Construction Experiences to our clients through the utilization of our own skilled professionals and workforce. As a division of Megen Construction, Megen Works is built on the principles of quality, integrity, diversity and teamwork. Megen Works benefits projects by saving time, increasing flexibility, reducing costs and ensuring safety to deliver a high quality building.



CERTIFICATIONS:

Minority Business Enterprise (MBE)
City of Cincinnati, NMSDC

SERVICES:

Megen Works' talented team of skilled crafts people offer the following services:

Division 2:
Selective Demolition

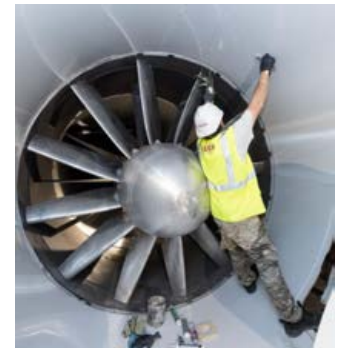
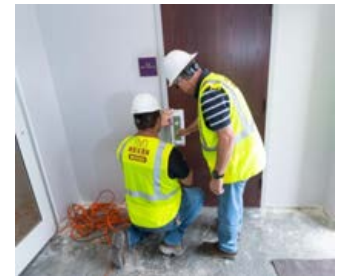
Division 6:
Rough Carpentry
Sheathing
Interior Finish Carpentry

Division 7:
Joint Sealants

Division 8:
Hollow Metal Doors and Frames
Flush Wood Doors
Access Doors and Frames
Door Hardware
Fixed Louvers

Division 9:
Non-Structural Metal Framing
Gypsum Board
Acoustical Panel Ceilings
Resilient Base and Accessories
Sound-Absorbing Wall Units
Exterior and Interior Painting
Staining and Transparent Finishes

Division 10:
Visual Display Units and Plaques
Wall and Door Protection
Toilet and Bath Accessories
Fire Extinguishers and Cabinets
Metal Lockers and Storage
Shelving



CUSTOMERS:

Megen Works has performed on projects for the following clients:

- 3CDC:** 1537 Race Street OTR Historic Renovation
- City of Cincinnati:** King Records Building Stabilization
- Corinthian Baptist Church:** New Church Complex
- GCNK African American Chamber:** Headquarters Office
- iFLY Cincinnati:** New Indoor Skydiving Facility
- Miami University:**
Mosler Hall E-Learning Renovation, Hamilton campus
Johnston Hall Renovation, Middletown campus
- Northern Kentucky Convention Center:** Lighting Reinforcement

MEGEN WORKS CONTACT INFO

Randy Johnson
Division Manager
Ph: 513.615.4955
rjohnson@
megenconstruction.com

MEGEN WORKS

Self Perform Division of Megen Construction Company